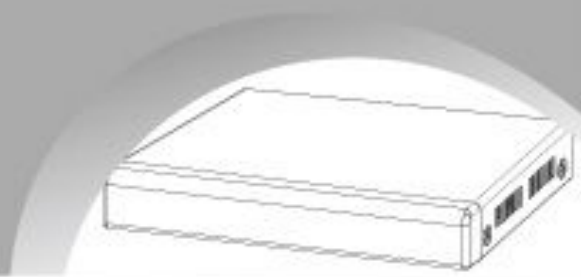


# H.264 Digital Video Recorder

## 4CH/8CH/16CH

V4.2G

# Quick Operation Manual



## DVR System Operation

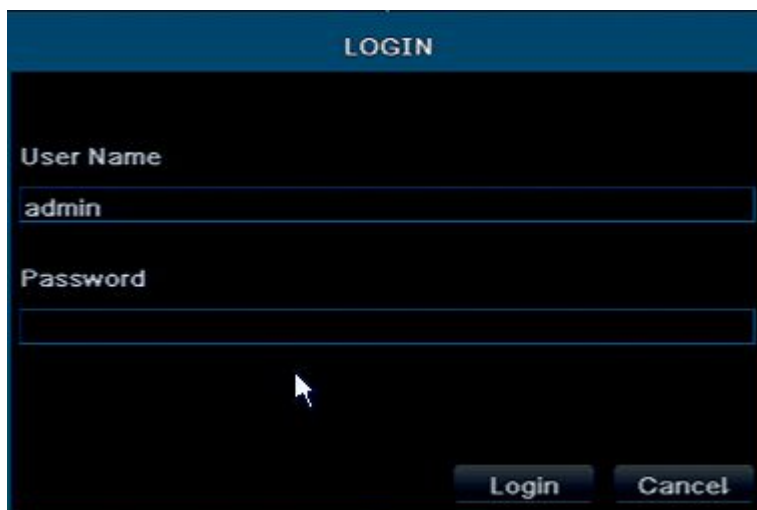
**Tips 1:** The DVR defaulted display mode is VGA, if user use DVR BNC(CVBS) port for output, please press the front panel "menu" button for about 15s till system switching to BNC display mode automatically, or use VGA output, to access into the DVR system and adjust the screen display resolution too CVBS, then user can operate and control the DVR.

**Tips 2:** If the Computer is Win8 System, pls log in the computer as administrator

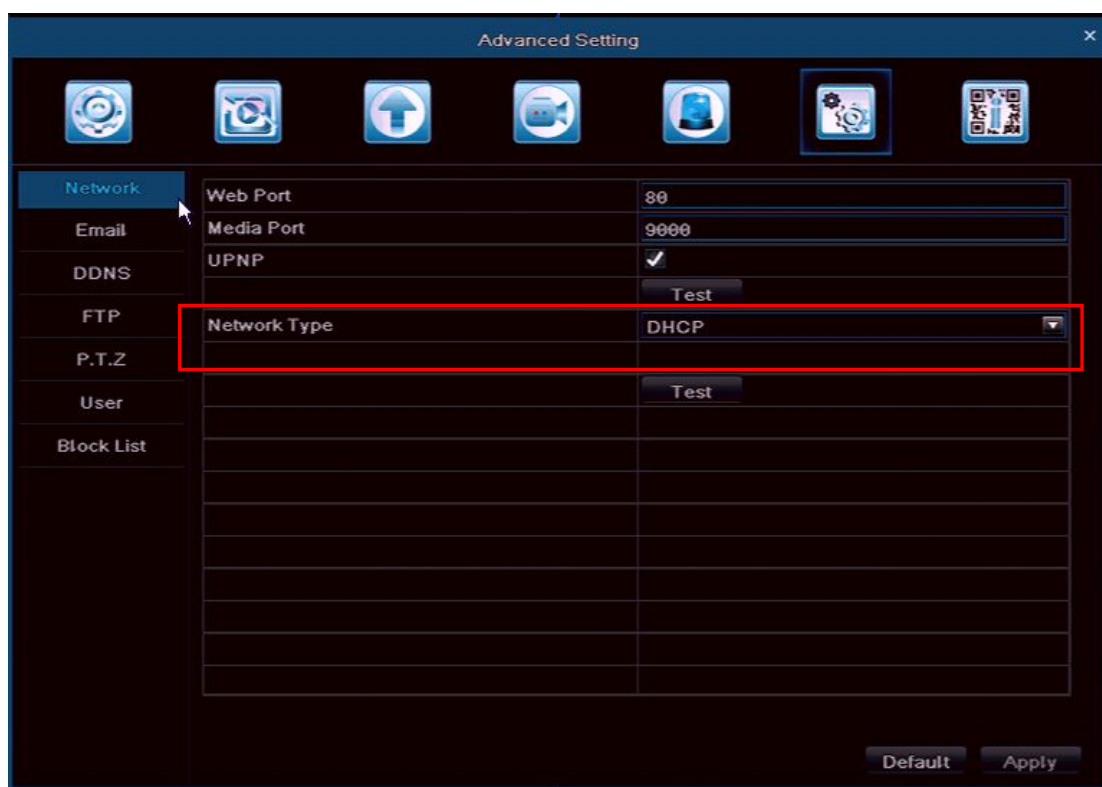
If the DVR has the Cloud function (UID), Remote view can be realized by the following ways:

### System Login

The factory default user name: admin; password: 0000 0000  
(eight Zero)



Enter the Main Menu>>>>Advanced Setting>>>>Select the Network Type “DHCP”>>>>Click “Apply”.



After finish the network setting, enter the Main Menu>>>>QR & Information>>>>Network.

Here, user can check the DVR’s IP Address, UID and the Cloud Status. If the the Cloud status is connected, then user can use the

UID to visit the DVR. If it shows unconnected, user need to check the internet status or the network cables.

Category	Value	
QR Code	Web Port 7808	
System	Media Port 9008	
	IP Address 192.168.002.182	
Event	Subnet Mask 255.255.255.000	
	Gateway 192.168.002.001	
Log	Preferred DNS Server 210.021.196.006	
	Alternate DNS Server 192.168.002.001	
Network	Networking Approach DHCP	
Online	Status Connected	
	DDNS Unconnected	
	MAC 14-90-90-09-13-32	
	UID (P2P ID) hjF-hIu-RLu-ruU-sdb-IZR-jd	
	Cloud Connected	

While the Cloud is connected, you start remote view on your computer.

### 1- Browser:

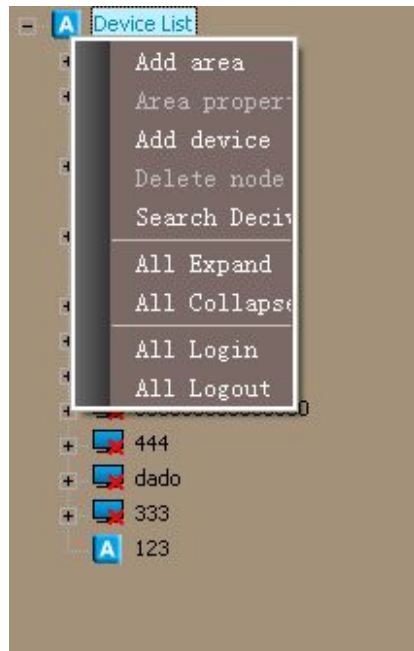
Enter: <http://www.easyconfigure.com> in IE browser>>>>Install the “ActiveX”>>>>Enter the UID of the DVR, Default User Name : “admin”, Default Password: 00000000 (eight zero)>>>>Click “Login” and start to view.

## 2- CMS

First, copy the CMS software from the CD and install into computer, for the first running, user need to register Administrator's user name and set the password.

After registering, enter the User Name and password>>>>Click "OK" to login.

After logging, right click the Device List>>> click “Add Device”.



Then it will pop up below window. There are two Login Type: IP Login ( visit via DDNS), and P2P Login (visit via UID).

Select “P2P”>>>enter the P2P ID>>> enter any name in “Device Name”>>>Enter the defaulted “Device User Name “admin”, and the defaulted password “00000000” (Eight zero”).

After finish adding, right click the new-added device >>>Login,



Click all the Channels and open to remote control

### 3- Mobile phone

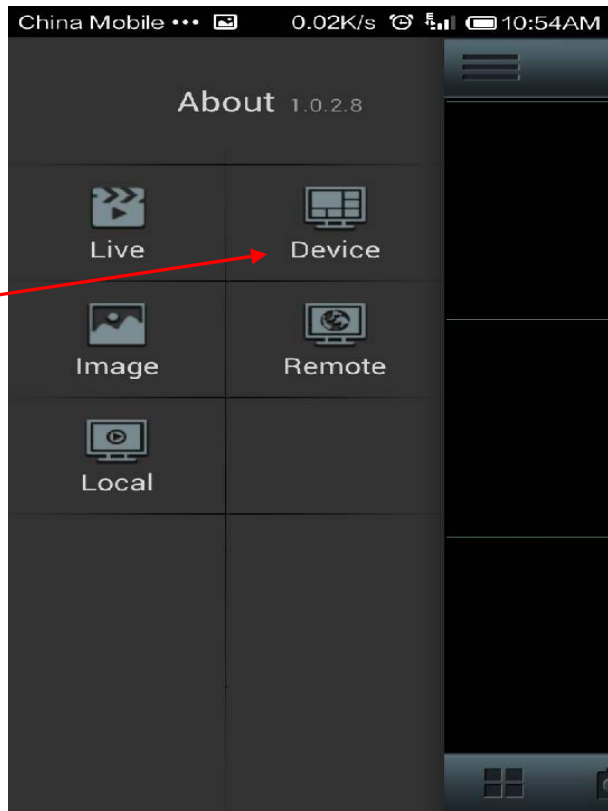
Android for Example, Apple App is Similar

1.Please download “VIDEODEFENCEV2” from Google Play or App Store

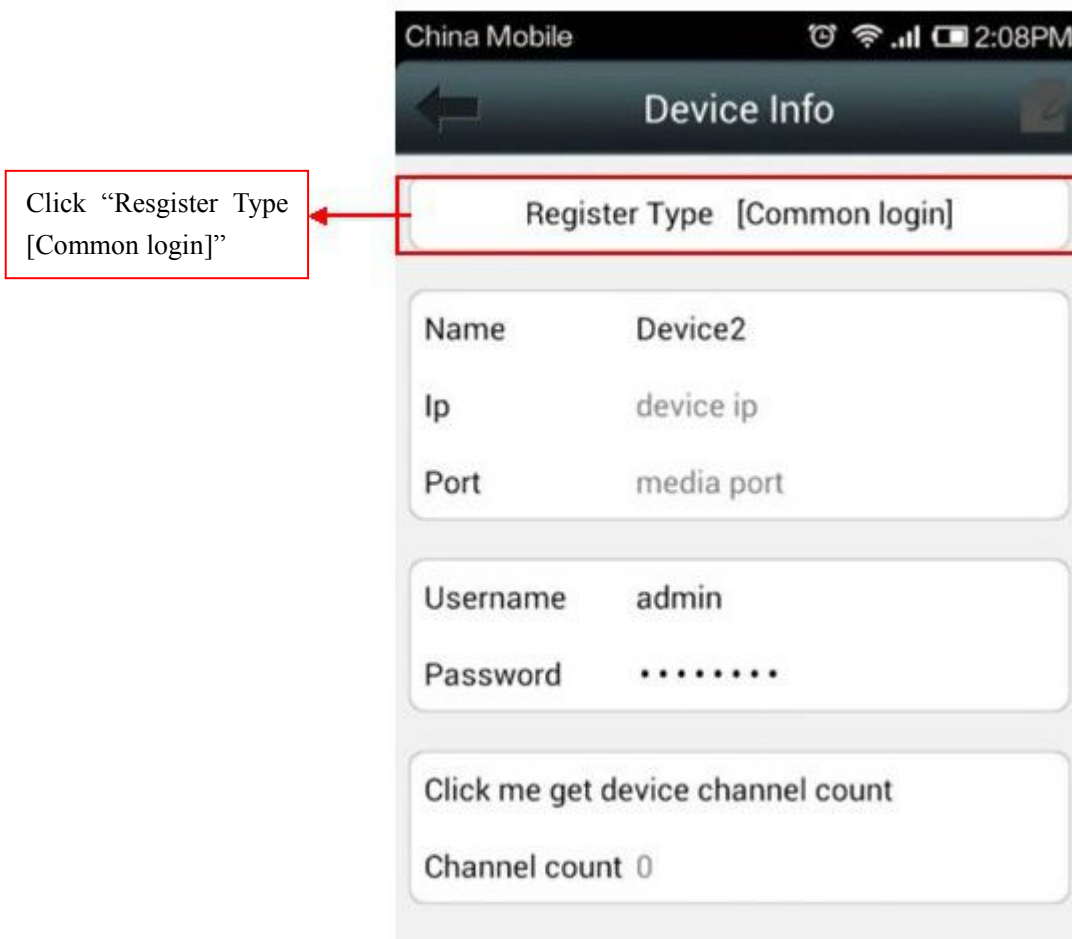
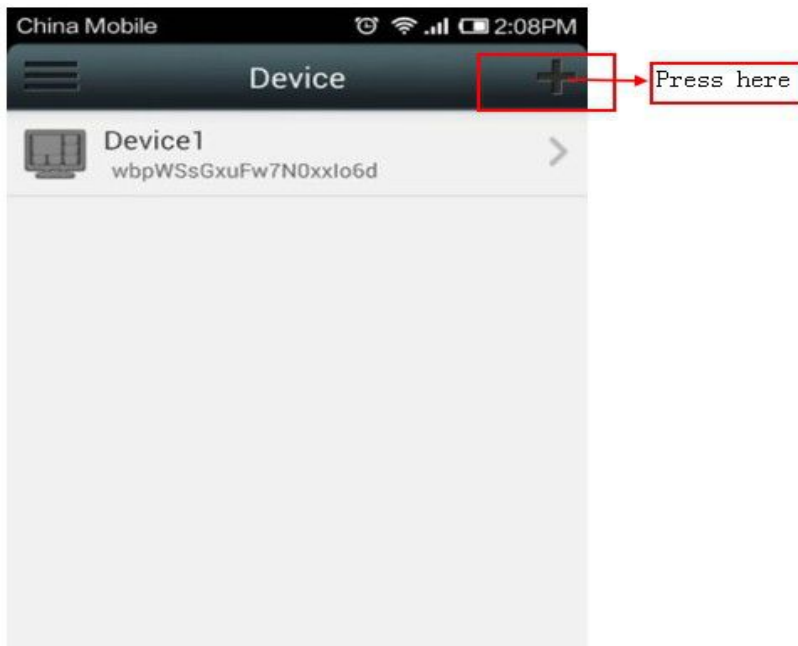
Download "VIDEODEFENCE V2" from Google Play



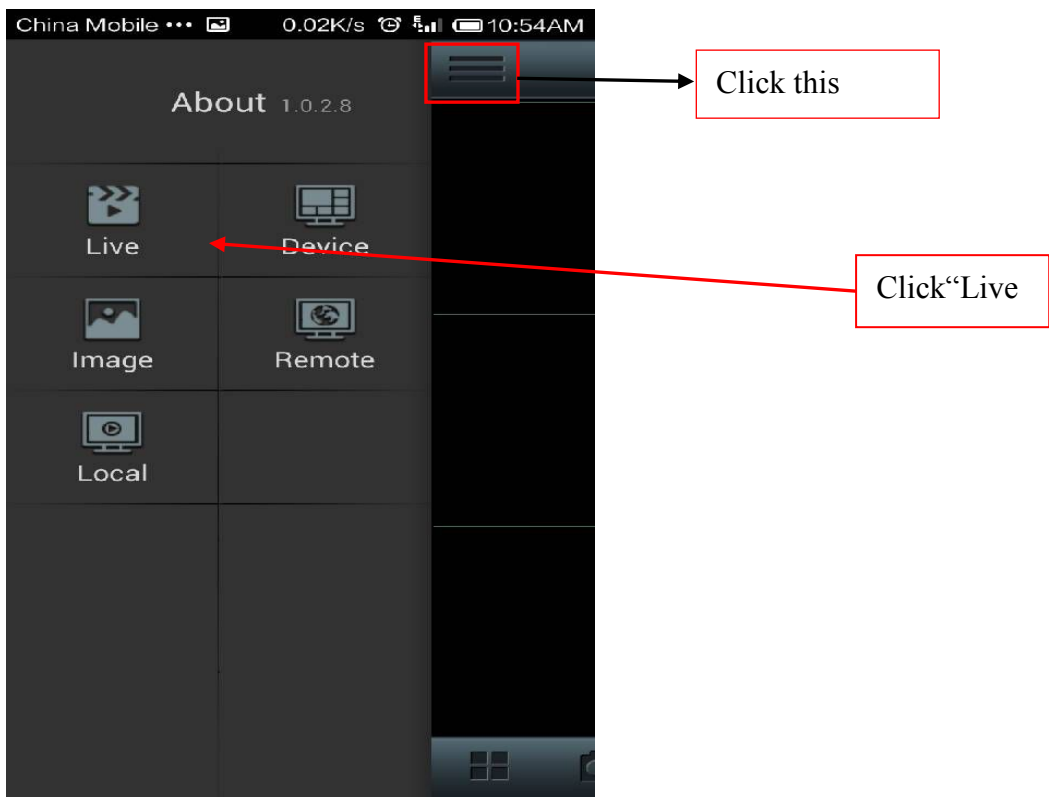
Click "Device"





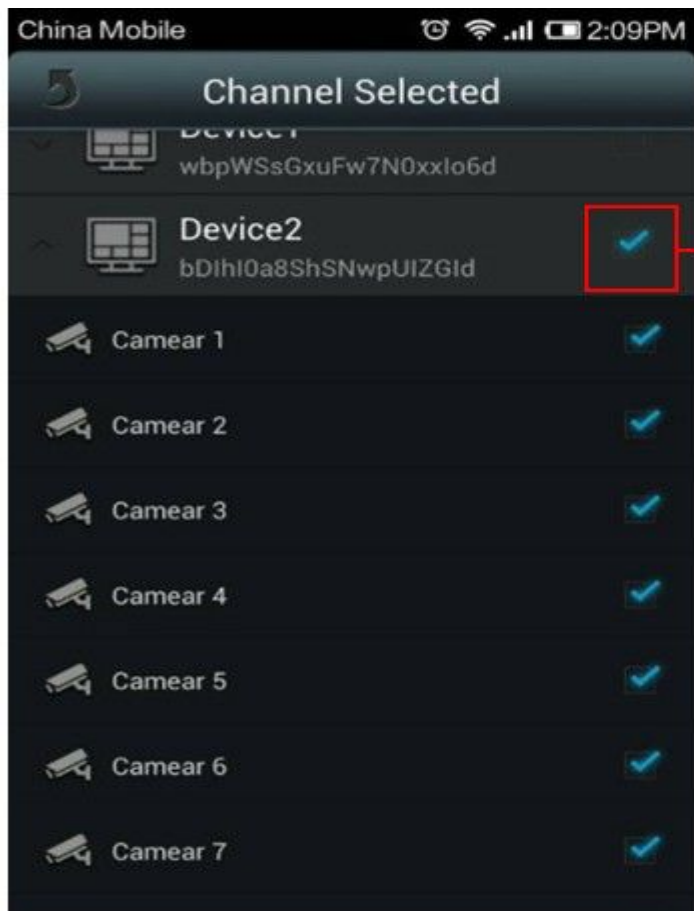




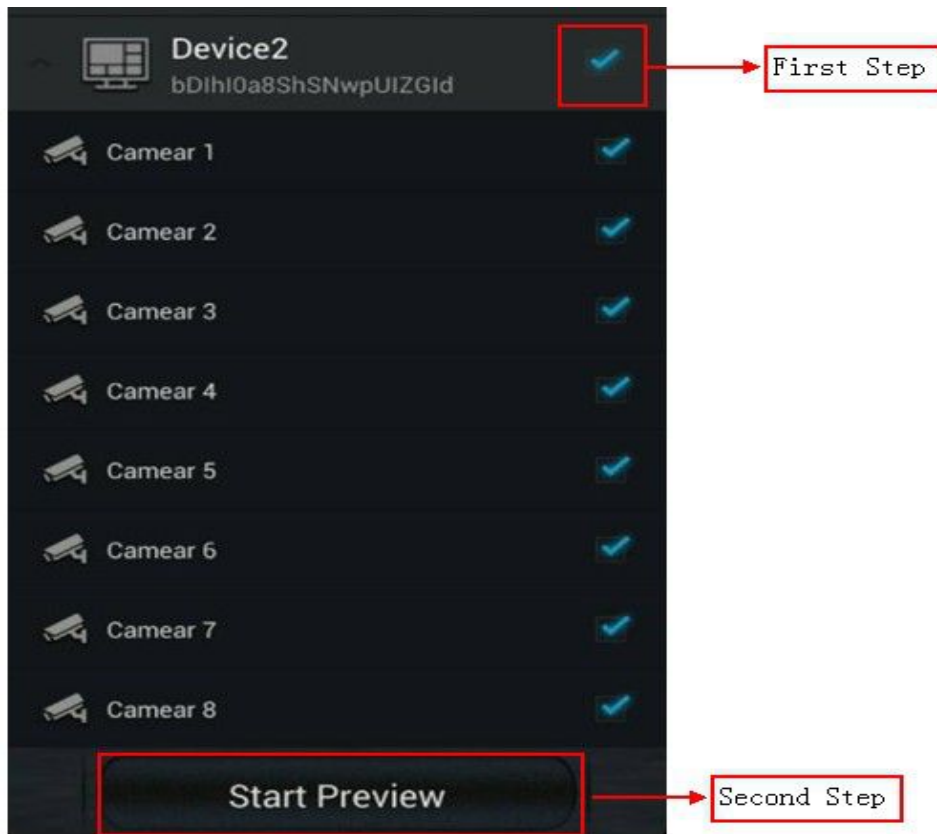




Click this



Remember this



▲ Nothing contained in the manual attached to this product shall be duplicated, disseminated, transcribed or stored in any retrieval system or translated into any other language without written consent.

▲ The product specifications and information contained in this manual are for reference only, and the contents thereof are subject to updating without notice, and If you want to waste this product, please hand over to have environmental qualification of third parties.

▲ We assume no responsibility for any damage arising from the improper use of this product, the product names mentioned in this manual are intended for identification only, and may also be registered trademarks or copyrights owned by other companies.

▲ The product color provided in this marketing package may differ from the color shown on the original package.the pictures are for reference only, the technical specifications are subject to change without notice, the accessories available may differ from market to market, please consult your local dealer.

▲ This manual has been checked carefully but any spelling or technical error is precluded, such error or omission will be corrected in the new version, we have the right to modify any and all information contained in this manual without notice.