

H.264 Analog High Definition

4CH/8CH/16CH

Quick Operation Manual

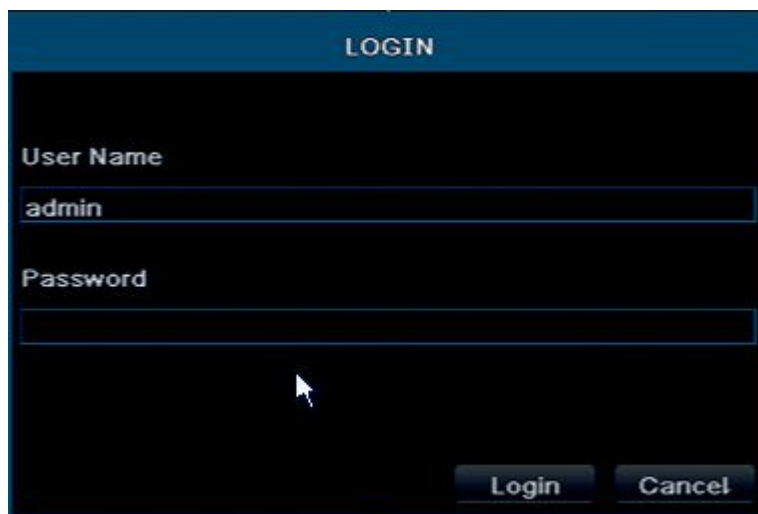
AHD System Operation

Tips : If the Computer is Win8 System, pls log in the computer as administrator

If the AHD has the Cloud function (UID), Remote view can be realized by the following ways:

System Login

The factory default user name: admin; password: 0000 0000 (eight Zero)



The image shows a login window titled "LOGIN". It has a dark blue header. Below the header, there are two input fields: "User Name" and "Password". The "User Name" field contains the text "admin". The "Password" field is empty. At the bottom right of the window, there are two buttons: "Login" and "Cancel". A mouse cursor is visible over the "Login" button.

Enter the Main Menu>>>>Advanced Setting>>>>Select the Network Type "DHCP">>>>Click "Apply".

Category	Parameter	Value
QR Code	Web Port	7808
System	Media Port	9008
Event	IP Address	192.168.002.182
Log	Subnet Mask	255.255.255.000
Network	Gateway	192.168.002.001
	Preferred DNS Server	210.021.196.006
Online	Alternate DNS Server	192.168.002.001
	Networking Approach	DHCP
	Status	Connected
	DDNS	Unconnected
	MAC	14-90-90-09-13-32
	UID (P2P ID)	hJF-hIu-RLu-ruU-sdb-IZR-jd
	Cloud	Connected

While the Cloud is connected, you start remote view on your computer.

1- Browser:

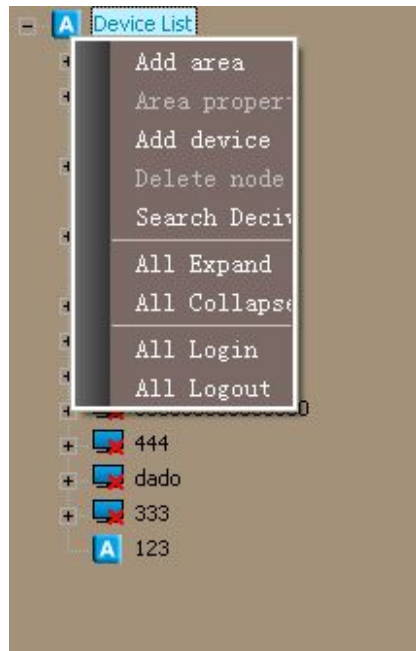
Enter: <http://www.easyconfigure.com> in IE browser>>>Install the “ActiveX”>>>Enter the UID of the AHD, Default User Name : “admin”, Default Password: 00000000 (eight zero)>>>Click “Login” and start to view.

2- CMS

First, copy the CMS software from the CD and install into computer, for the first running, user need to register Administrator's user name and set the password.

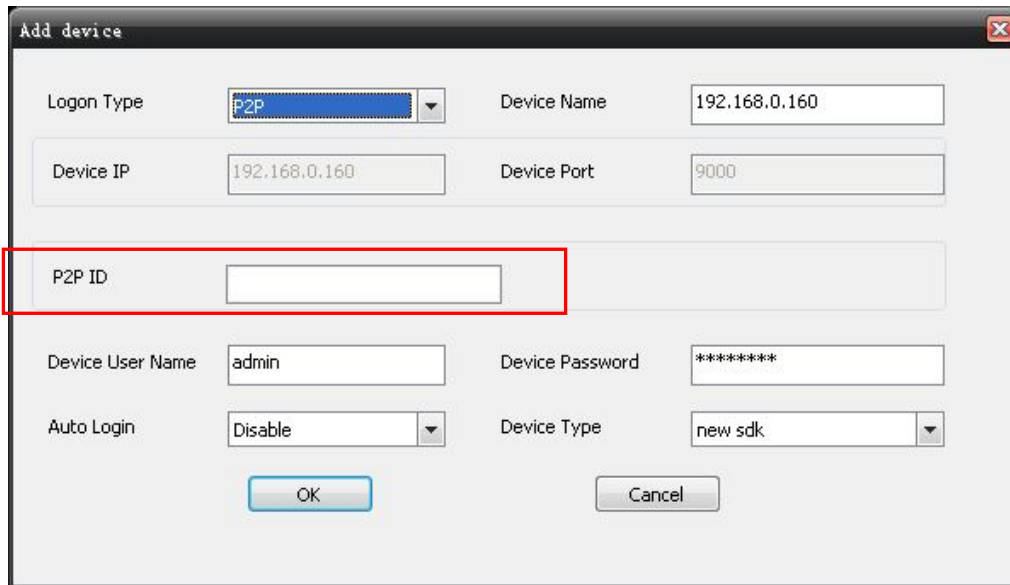
After registering, enter the User Name and password>>>>Click "OK" to login.

After logging, right click the Device List>>> click “Add Device”.



Then it will pop up below window. There are two Login Type: IP Login (visit via DDNS), and P2P Login (visit via UID).

Select “P2P”>>>enter the P2P ID>>> enter any name in “Device Name”>>>Enter the defaulted “Device User Name “admin”, and the defaulted password “00000000” (Eight zero”).



After finish adding, right click the new-added device >>>Login,



Click all the Channels and open to remote control

3- Mobile phone

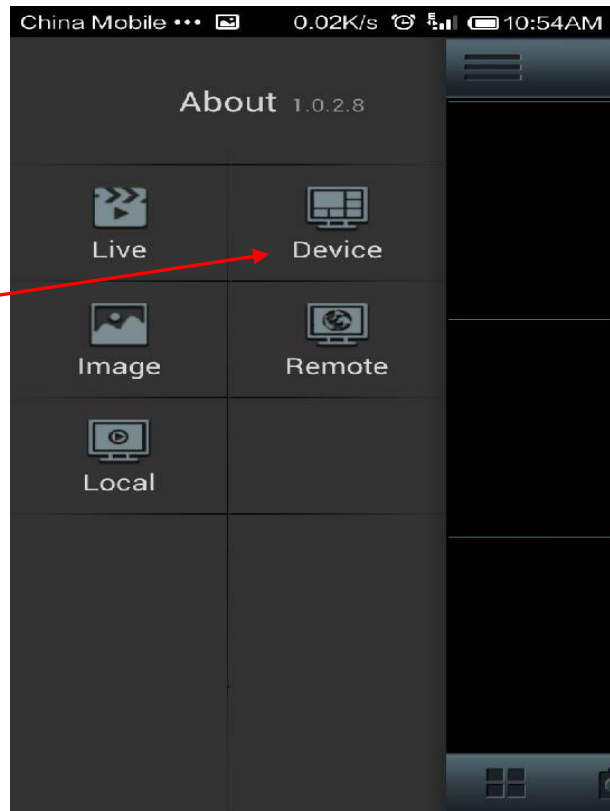
Android for Example, Apple App is Similar

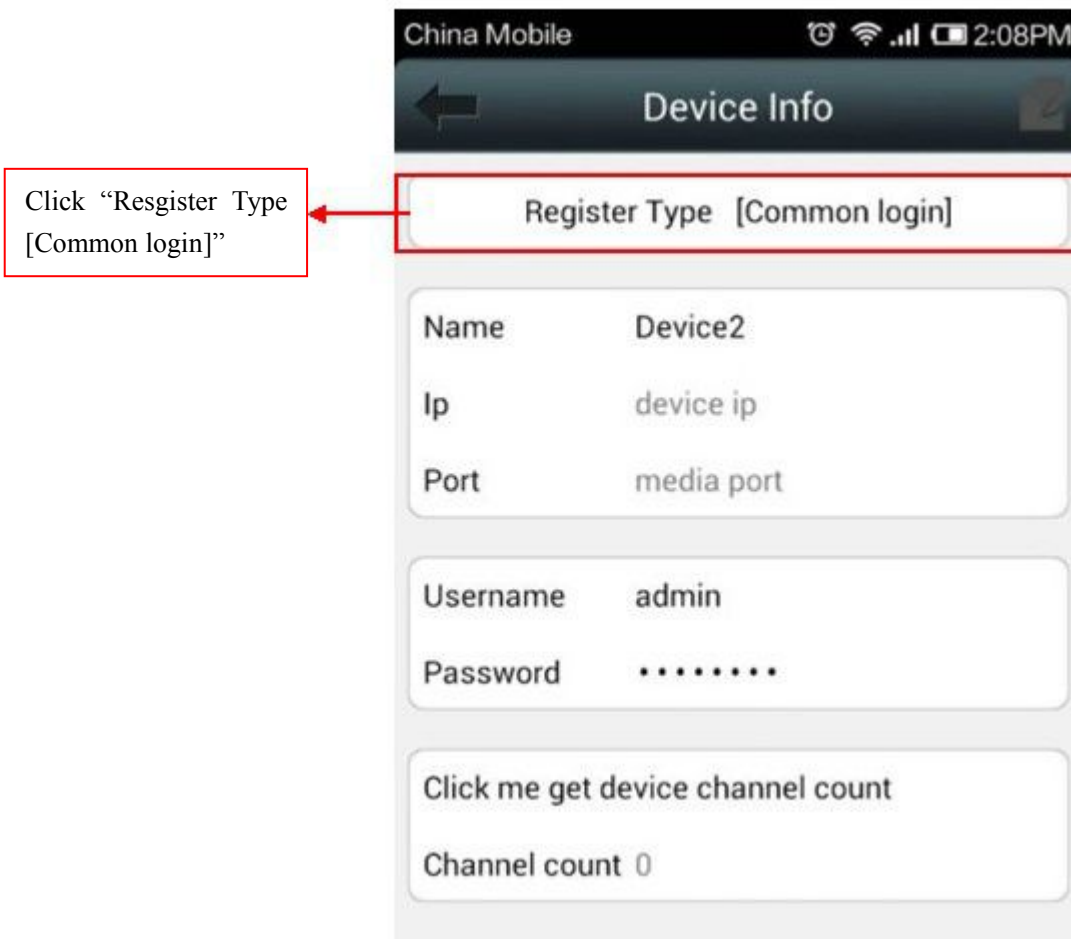
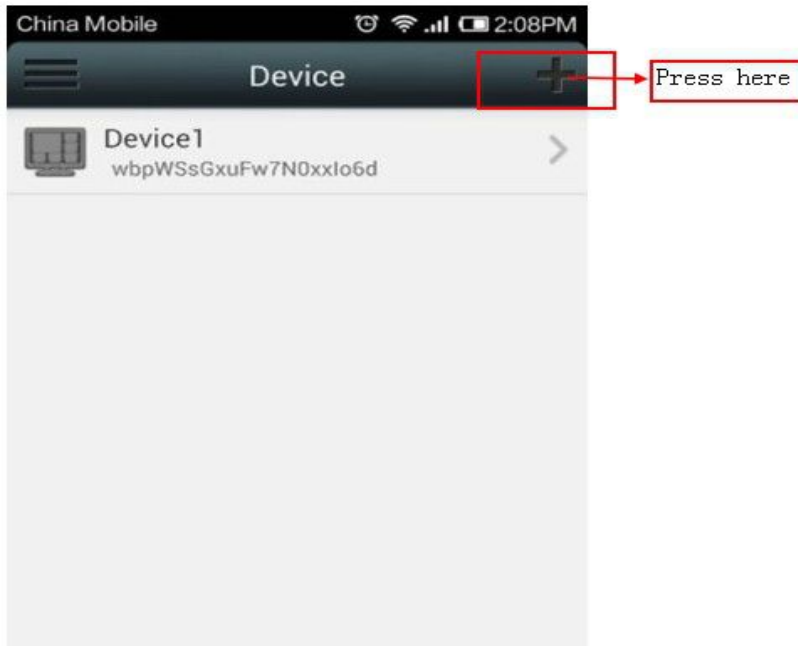
1.Please download “VIDEODEFENCEV2” from Google Play or App Store

Download "VIDEODEFENCE V2" from Google Play

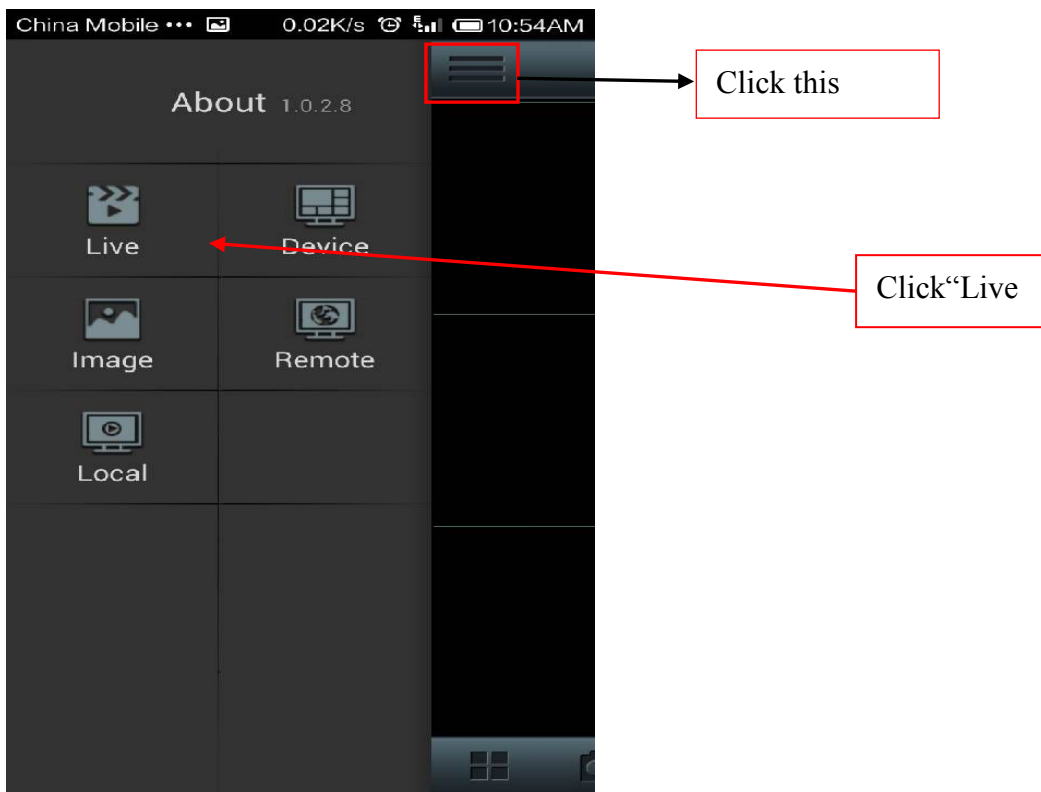


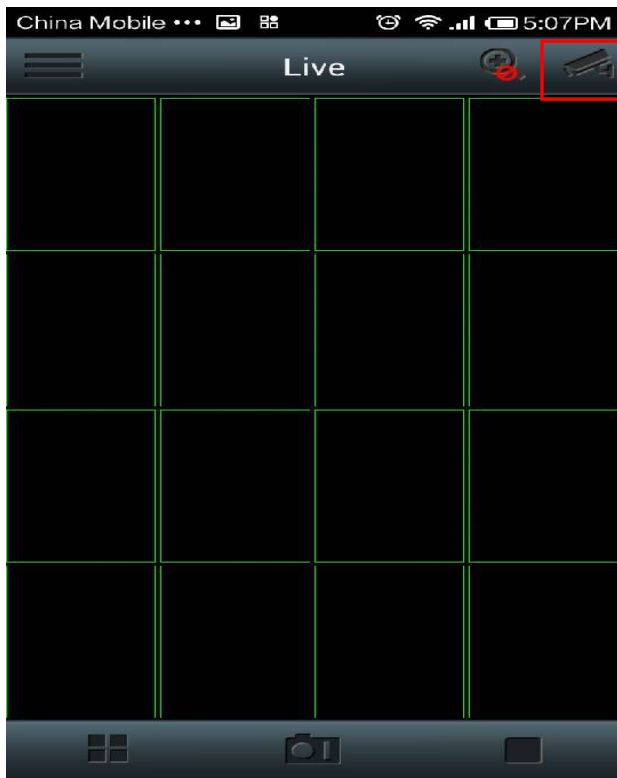
Click "Device"



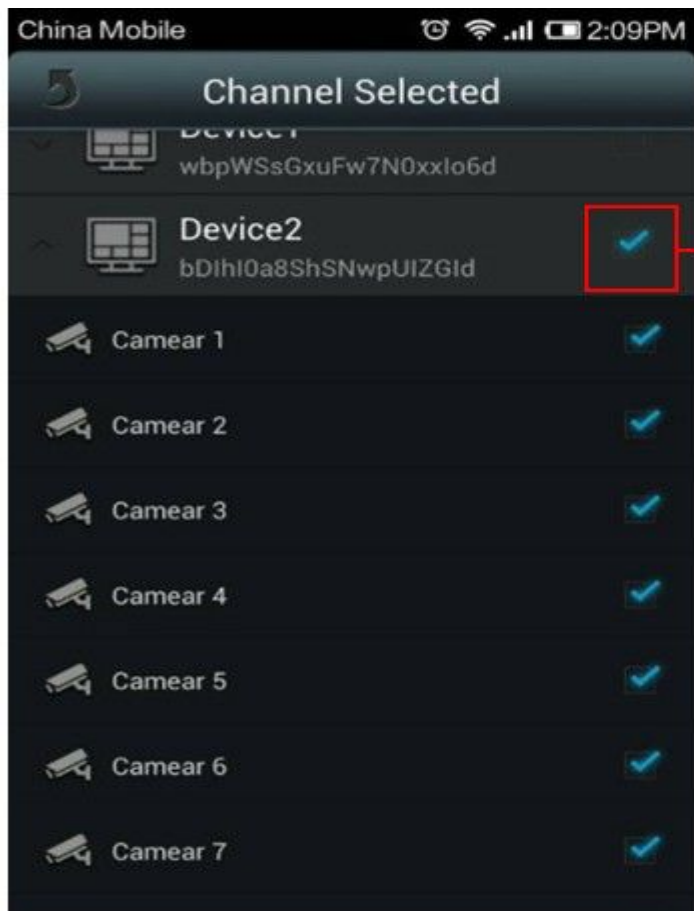




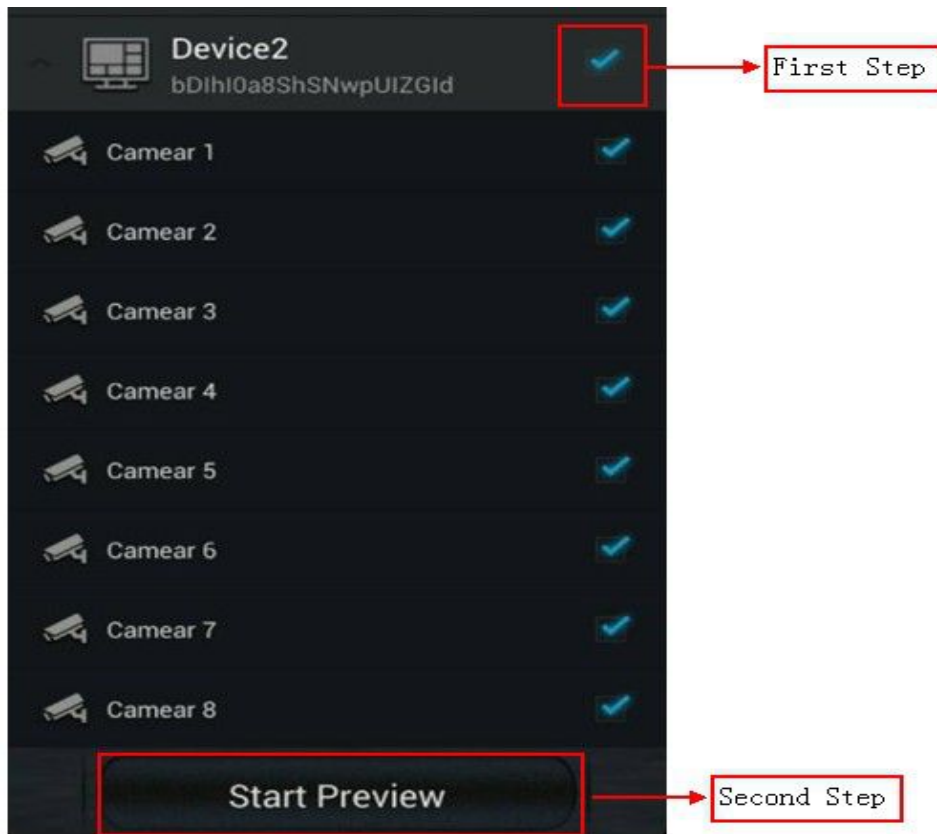




Click this



Remember this



▲ Nothing contained in the manual attached to this product shall be duplicated, disseminated, transcribed or stored in any retrieval system or translated into any other language without written consent.

▲ The product specifications and information contained in this manual are for reference only, and the contents thereof are subject to updating without notice, and If you want to waste this product, please hand over to have environmental qualification of third parties.

▲ We assume no responsibility for any damage arising from the improper use of this product, the product names mentioned in this manual are intended for identification only, and may also be registered trademarks or copyrights owned by other companies.

▲ The product color provided in this marketing package may differ from the color shown on the original package.the pictures are for reference only, the technical specifications are subject to change without notice, the accessories available may differ from market to market, please consult your local dealer.

▲ This manual has been checked carefully but any spelling or technical error is precluded, such error or omission will be corrected in the new version, we have the right to modify any and all information contained in this manual without notice.